

# ONLINE AUCTION

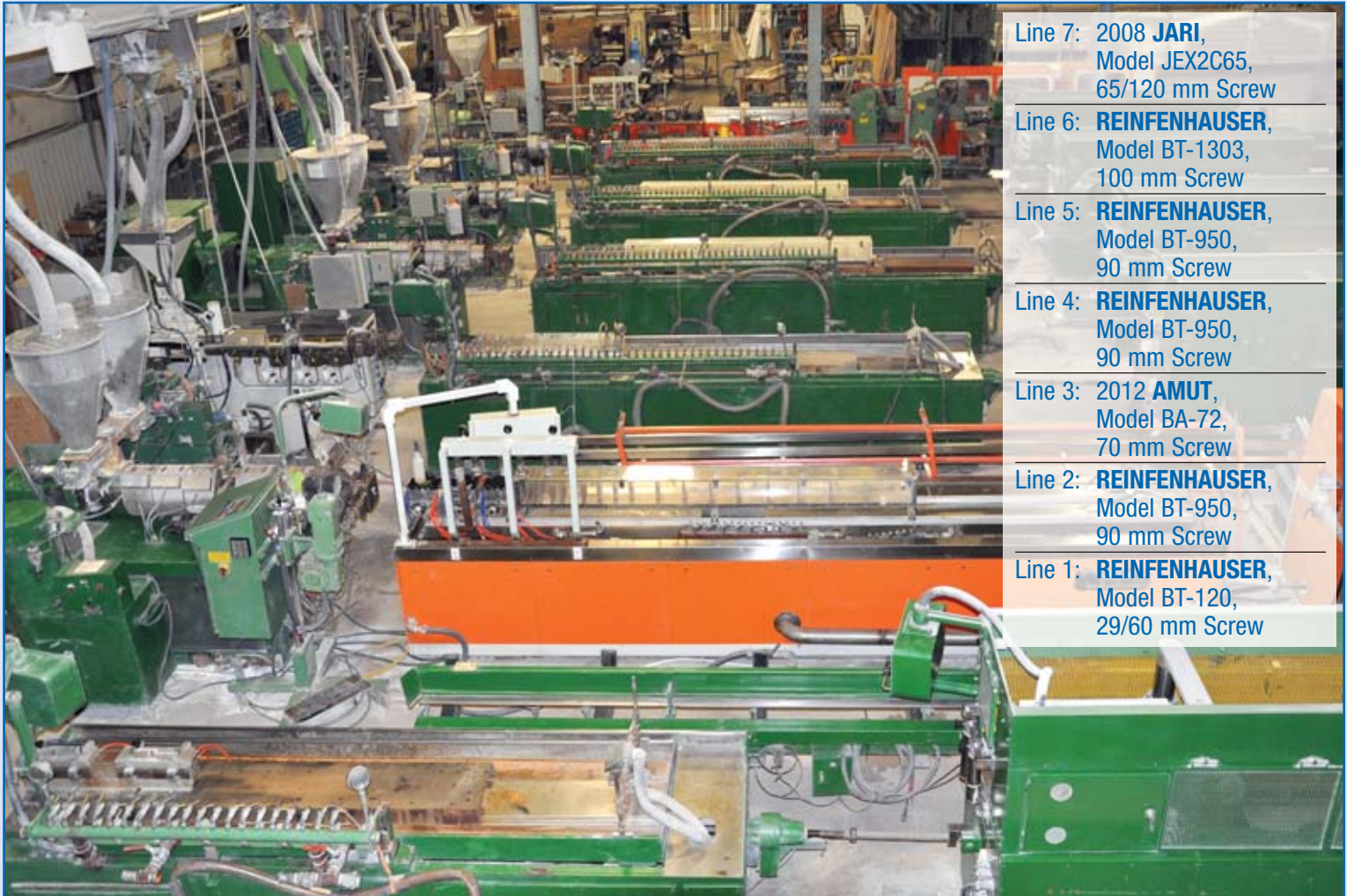
Due to the Extrusion Department Closure of

**Bidding Starts: Tuesday July 23<sup>rd</sup> 9 AM ET**  
**Bidding Ends: Wednesday July 24<sup>th</sup> 2 PM ET**  
Inspection: Thursday July 18<sup>th</sup> 9 AM – 3 PM ET  
or by appointment

1641 Topsail Road, Paradise, Newfoundland, Canada



## 7 Window Profile Extruder Lines – As New As 2011!



- Line 7: 2008 JARI, Model JEX2C65, 65/120 mm Screw
- Line 6: REINFENHAUSER, Model BT-1303, 100 mm Screw
- Line 5: REINFENHAUSER, Model BT-950, 90 mm Screw
- Line 4: REINFENHAUSER, Model BT-950, 90 mm Screw
- Line 3: 2012 AMUT, Model BA-72, 70 mm Screw
- Line 2: REINFENHAUSER, Model BT-950, 90 mm Screw
- Line 1: REINFENHAUSER, Model BT-120, 29/60 mm Screw

VIEW OF 7 WINDOW PROFILE EXTRUDER LINES

***Acan Windows & Doors Is Selling Its Extrusion Department As Surplus To Its Ongoing Operations.***

*Acan continues to manufacture & distribute windows, entrance systems and patio doors with the same dedication to quality and customer service. **Assets Are Under Power Located in Paradise, Newfoundland***

**ONLINE AUCTION ONLY Via Bidspotter.com**



AUCTIONS • LIQUIDATIONS  
FINANCING • APPRAISALS

**905.669.8893**  
infinityassets.com

 Like us at: facebook.com/  
Infinity-Asset-Solutions-Inc

 Follow us at: twitter.com/  
InfinityAssets

# 7 Window Profile

**AMUT Extruder Installed New In 2012, Cost Over \$150,000**

**Line 3**



**Screws Changed in 2007**

2011 **AMUT** Extruder Model BA-72, Type Quadro-R 12 Zone Temp Control Cabinet, 70 mm Twin Parallel Screw, Outward Counter Rotating, Surveyor Control System, Hourly Output Rate 40 min to 120 kgs, 3.5-35 RPM, 7,036 Pound-Force Foot, 24.1 HP, Screws Changed in 2007, sn V3254AI

**KUM S00** Downstream Equipment Includes: 18.6' Calibrator Table, 18' Puller & Cutoff Saw, 20.5' Run Out Table (Line 3)

**Line 7**



2008 **JARI** Extruder Model JEX2C65, 65/120 mm Twin Conical Screw, 46.9 HP, sn 843-9B02022401

2008 **JARI** Downstream Equipment Includes: 19.1' Calibrator Table, 9.6' Puller, 5.6' Cutoff Saw, 19.7' Run Out Table (Line 7)

# The Extruder Lines – As

**Line 2, 4 & 5**



**Screws Changed in 2006**



**1 of 3 REINFENHAUSER Model BT950**



**Downstream by JARI & KUM SOO As New AS 2010**



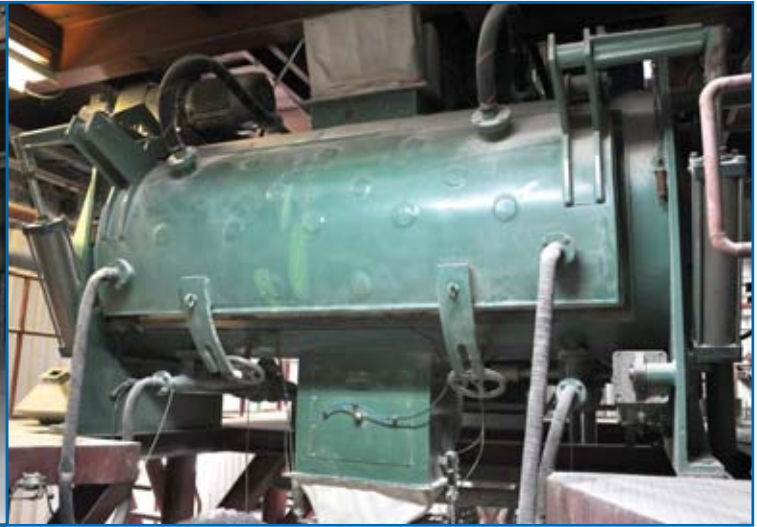
**REINFENHAUSER** Model BT-950-2-90-17V, 90 mm Twin Parallel Screw, Counter Rotating, 1.4-27.9 RPM, 6,638 Pound-Force Foot, 36.8 HP, Lines 2,4,5 Respectively: Hours: 56,117, 34,143, 45,723, Screws Changed In: 1996, 2006, 2006, sn's: 32068, 32069, 32070  
 Line 2: 2010 **JARI** Downstream Equipment Includes: 19.1' Calibrator Table, 9.6' Puller, 5.6' Cutoff Saw, 19.7' Run Out Table  
 Lines 4 & 5: **KUM SOO** Downstream Equipment Includes: 18.6' Calibrator Table, 18' Puller & Cutoff Saw, 20.5' Run Out Table

**Line 1**



**REINFENHAUSER** Model BT-120, Type Schaltschrank, 29/60 mm Twin Conical Screw, Counter Rotating, 7.4-74 RPM, Max Screw Torque 848 Pound-Force Foot, 13.4 HP, 46,635 hrs, sn 33015  
**KUM SOO** Downstream Equipment Includes: 12.1' Calibrator Table, 13.1' Puller & Cutoff Saw, 19.8' Run Out Table (Line 1)





PVC Blending System Including: **KAWATA** Hopper Model HSE-722W, sn UU40038, plus **SHIN HWA** Water Cooled Jacketed Mixer, Control Panels Etc.



**DAESUNG** Model ST-160 Compound Dust Collector

**JIN YOUNG** EDM Model JDE-45S, SP-50A Control, Work Size 17.7" x 12.6" x 11.8", 3 Axis DRO, Fire Suppression, sn 93031



PVC Silo:  
Approx. 12' Dia. x 31' High  
  
Compound Silo:  
Approx. 7.5' Dia. x 19' High



**MARLEY** Outdoor, Cooling Tower, Model 221, Ground Mounted, sn 51445/90, Plus Assorted Pumps, Piping Etc.

**CHEVALIER** 12" x 24" Surface Grinder, Model FST-3A1224H, Electro Magnetic Chuck, Pendant Control, Filtration, sn P383B006



TRANSCRANE 1 Ton Cranes, 35' & 17' Width

(2) **TRANSCRANE** 1 Ton Cranes, 35' & 17' Width, 1 Ton Richard Wilcox Electric Hoist, Single Girder, Runway and Buzzbar not included

(1) **MILLER** Welder Model Dialarc 250, 230/460/575, sn JK658633

(1) **MILLER** Welder Model Dialarc HF, 230/460/575, sn JJ453470

(2) **WELDING POINT** Spot Welders, Model AN101

**ATLAS COPCO** 125 HP Air Compressor Model ZA3, Elektronikon Control, Oil Free Air

**GALAXY** Air Dryer, Model 905EH-023, Flow Rate 940 NM3/hr, sn 500-ENP

Scissor Lift Table - Table Size: 98" x 30", Lift Height: 60"



GALAXY Air Dryer, Model 905EH-023



ATLAS COPCO 125 HP Air Compressor



Scissor Lift Table: - Table Size: 98" x 30", Lift Height: 60"



View of Assorted Miller & Welding Point Welders

Bid Online Via

**TERMS OF SALE**

**PAYMENT:** A \$2,000 refundable security deposit is required upon online registration. 18% Buyer's Premium applies. Balance due by 4 pm, Thursday July 25th, 2013. NO EXCEPTIONS. All goods are sold "As Is, Where Is", ALL SALES ARE FINAL. All subject to prior sale. Complete terms and conditions including removal procedures, are available on our website. **REMOVAL TIMES:** All items by Wednesday August 6. Hours: Monday – Friday between 8 am – 4 pm.

**LOCATION:** 1641 Topsail Road, Paradise, Newfoundland, Canada, A1L1V1. Approx. 25 km or 30 mins from St. John's Newfoundland Airport.

*This brochure is meant merely as a guide. Infinity Assets makes no guarantee, expressed or implied, as to the accuracy of the information in this brochure. Buyers should inspect the goods beforehand to satisfy themselves.*

Member In Good Standing Of:



INDUSTRIAL AUCTIONEERS ASSOCIATION



**INFINITY**  
 Asset Solutions  
 AUCTIONS • LIQUIDATIONS  
 FINANCING • APPRAISALS

Like us at: facebook.com/  
 Infinity-Asset-Solutions-Inc

Follow us at: twitter.com/  
 InfinityAssets

63 Maplecrete Road, Concord, Ontario L4K 1A5 Canada  
**infinityassets.com** • Tel: (905) 669-8893 • Fax: (905) 669-7512